

BRONZO



Oggetti-scultura realizzati in fusione di bronzo a cera persa. Questa antichissima tecnica, partendo da un modello in cera, ritoccato a mano, consente di realizzare uno stampo in negativo dove è colata la fusione incandescente che viene poi gradualmente raffreddata. Seguono particolari e sofisticati processi di patinatura e antichizzazione. L'alto magistero tecnico e l'arte necessaria per realizzare una fusione di bronzo danno come risultato un'opera di elevato valore artistico. Ogni oggetto presentato in queste collezioni è garantito originale ed è fuso in esclusiva per Gammadeltagroup.



These sculptured objects are obtained with lost-wax bronze casting. This very ancient technique starts from a hand-finished wax model from which a negative mould is created. The white-hot cast is poured into this mould and slowly left to cool. Special and refined coating and aging processes are then carried out. The high standards of mastery and the skills displayed when realizing bronze casting produce works of great artistic value. Each piece included in these collections is certified as original, and is exclusively cast for Gammadeltagroup.



Objekte-Skulpturen, die in Bronzegegüß gefertigt sind. Diese Technik, die zu den ältesten überhaupt gehört, geht von einem Wachsmodell aus, das von Hand nachgearbeitet wird. Hiervon wird dann eine Negativform erstellt, in welche die glühendheiße Schmelzflüssigkeit gegossen wird, die anschließend nach und nach abgekühlt wird. Es folgen ganz bestimmte und ausgefeilte Prozesse für die Patinierung und Antikisierung. Die hohe technische Meisterschaft und die notwendige Kunstfertigkeit, um einen Bronzegegüß zu auszuführen, ergeben als Resultat ein Werk von hohem künstlerischen Wert. Jedes der in diesen Kollektionen präsentierten Objekte ist garantiert ein Original und wird exklusiv für Gammadeltagroup geschaffen.











IL GONDOLIERE - KW001 - L38 P22 H115



























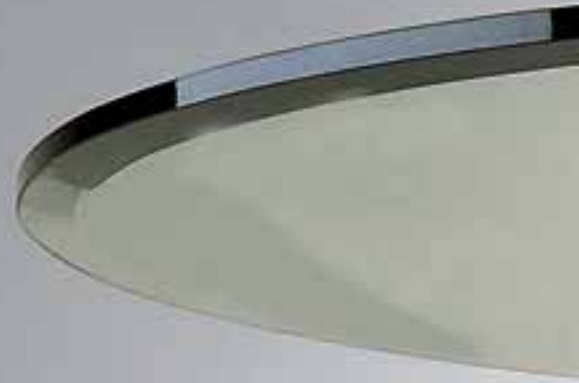


















































KW0174 - D28 H56 • KW1481 - D28 H54











BRONZO

BRONZE

BRONZE



Articolo: KW001
Lampada tavolo - IL GONDOLIERE
L 38 P 22 H 115
Max 1x100W E27
Statua in fusione di bronzo a cera persa patinata, vetro di Murano soffiato a mano.



pg. 41

Article: KW001
Table lamp - IL GONDOLIERE
L 38 P 22 H 115
Max 1x100W E27
Bronze patined objet, hand-made Murano glass.

pg. 41

Artikel: KW001
Tischlampe - IL GONDOLIERE
L 38 P 22 H 115
Max 1x100W E27
Bronze patiniert Objekt, handgeblasenes Murano Glass.

pg. 41



Articolo: KW001T
Lampada terra
L 38 P 22 H 210
Max 1x100W E27
Statua in fusione di bronzo patinata, vetro di Murano soffiato a mano, base marmo botticino.



pg. 42

Article: KW001T
Floor lamp
L 38 P 22 H 210
Max 1x100W E27
Bronze patined objet, hand-made Murano glass, botticino base marble.

pg. 42

Artikel: KW001T
Bodenlampe
L 38 P 22 H 210
Max 1x100W E27
Bronze patiniert Objekt, handgeblasenes Murano Glas, botticino Marmor Basis.

pg. 142



Articolo: KW0901
Tavolo pranzo
L 240 P 110 H 75
Struttura in fusione di bronzo a cera persa patinata, base marmo botticino.

pg. 45

Article: KW0901
Dining table
L 240 P 110 H 75
Bronze patined structure, botticino marble base.

pg. 45

Artikel: KW0901
Esszimmertisch
L 240 P 110 H 75
Bronze patiniert Struktur, Botticino Marmor Basis.

pg. 45



Articolo: KW0903
Tavolo salotto
L 140 P 70 H 41
Struttura in fusione di bronzo a cera persa patinata, base marmo botticino.

pg. 47

Article: KW0903
Tea Table
L 140 P 70 H 41
Bronze patined structure, botticino marble base.

pg. 47

Artikel: KW0903
Salontisch
L 140 P 70 H 41
Bronze patiniert Struktur, Botticino Marmor Basis.

pg. 47



Articolo: 1801TR
Specchiera
L 107 P 8 H 76
Max 20x10W G4 12V
Struttura in metallo, vetro di Murano soffiato a mano.



pg. 49

Article: 1801TR
Mirror
L 107 P 8 H 76
Max 20x10W G4 12V
Metal structure, hand-made Murano glass.

pg. 49

Artikel: 1801TR
Spiegel
L 107 P 8 H 76
Max 20x10W G4 12V
Metal Struktur, handgeblasenes Murano Glas.

pg. 49



Articolo: KW0902
Console
L 142 P 40 H 75
Struttura in fusione di bronzo a cera persa patinata argento, base marmo botticino.

pg. 49

Article: KW0902
Console
L 142 P 40 H 75
Bronze patined structure, botticino marble base.

pg. 49

Artikel: KW0902
Konsole
L 142 P 40 H 75
Bronze Struktur patiniert, Botticino Marmor Basis.

pg. 49



Articolo: KW0905
Tavolo pranzo
L 160 P 115 H 75
Struttura in fusione di bronzo a cera persa patinata, base marmo botticino.

pg. 51

Article: KW0905
Dining table
L 160 P 115 H 75
Bronze patined structure, botticino marble base.

pg. 51

Artikel: KW0905
Esszimmertisch
L 160 P 115 H 75
Bronze patiniert Struktur, Botticino Marmor Basis.

pg. 51



Articolo: CP291
Lampada terra
D 38 H 215
Max 1x150W E27
Statua in fusione di bronzo a cera persa patinata, base in marmo botticino, vetro di Murano soffiato a mano.



pg. 53

Article: CP291
Floor lamp
D 38 H 215
Max 1x150W E27
Bronze patined object, botticino marble base, hand-made Murano glass

pg. 53

Artikel: CP291
Bodenlampe
D 38 H 215
Max 1x150W E27
Bronze patiniert Objekt, botticino Marmor Basis, handgeblasenes Murano Glass.

pg. 53



Articolo: CP026SX
Lampada terra
D 30 H 207
Max 1x150W E27
Statua figura maschile in fusione di bronzo a cera persa patinata, base in marmo botticino, vetro di Murano soffiato a mano.



pg. 55

Article: CP026SX
Floor lamp
D 30 H 207
Max 1x150W E27
Bronze patined object, hand-made Murano glass, botticino marble base.

pg. 55

Artikel: CP026SX
Bodenlampe
D 30 H 207
Max 1x150W E27
Bronze patiniert Objekt, handgeblasenes Murano Glass, botticino Marmor Basis.

pg. 55



Articolo: CP027DX
Lampada terra
D 30 H 207
Max 1x150W E27
Statua figura femminile in fusione di bronzo a cera persa patinata, base in marmo botticino, vetro di Murano soffiato a mano.



pg. 55

Article: CP027DX
Floor lamp
D 30 H 207
Max 1x150W E27
Bronze patined object, botticino marble base, hand-made Murano glass.

pg. 55

Artikel: CP027DX
Bodenlampe
D 30 H 207
Max 1x150W E27
Bronze patiniert Objekt, botticino Marmor Basis, handgeblasenes Murano Glass.

pg. 55



Articolo: CP024SX
Lampada tavolo
D 30 H 112
Max 1x150W E27
Statua figura maschile in fusione di bronzo a cera persa patinata, vetro di Murano soffiato a mano.



pg. 57 Article: CP024SX
Table lamp
D 30 H 112
Max 1x150W E27
Bronze patined object, hand-made Murano glass.

pg. 57 Artikel: CP024SX
Tischlampe
D 30 H 112
Max 1x150W E27
Bronze patiniert Objekt, handgeblasenes Murano Glass.



Articolo: CP025DX
Lampada tavolo
D 30 H 112
Max 1x150W E27
Statua figura femminile in fusione di bronzo a cera persa patinata, vetro di Murano soffiato a mano.



pg. 57 Article: CP025DX
Table lamp
D 30 H 112
Max 1x150W E27
Bronze patined object, hand-made Murano glass.

pg. 57 Artikel: CP025DX
Tischlampe
D 30 H 112
Max 1x150W E27
Bronze patiniert Objekt, handgeblasenes Murano Glass.



Articolo: KW2240
Oggetto bronzo
L 31 H 50
Oggetto in fusione di bronzo a cera persa patinato.

pg. 58 Article: KW2240
Object bronze
L 31 H 50
Bronze patined object.

pg. 58 Artikel: KW2240
Gegenstand bronze
L 31 H 50
Bronze patiniert Objekt.



Articolo: KW436
Lampada terra
D 55 H 210
Max 1x150W E27
Statua in fusione di bronzo a cera persa patinata, vetro di Murano soffiato a mano.



pg. 59 Article: KW436
Floor lamp
D 55 H 210
Max 1x150W E27
Bronze patined object, hand-made Murano glass.

pg. 59 Artikel: KW436
Bodenlampe
D 55 H 210
Max 1x150W E27
Bronze patiniert Objekt, handgeblasenes Murano Glass.

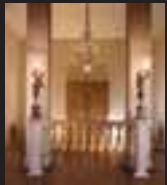


Articolo: CP302SX - CP303DX
Lampada tavolo
L 25 P 25 H 103
Max 1x100W E14
Statua in fusione di bronzo patinata, vetro di Murano soffiato a mano.



pg. 60 Article: CP302SX - CP303DX
Table lamp
L 25 P 25 H 103
Max 1x100W E14
Bronze patined object, hand-made Murano glass.

pg. 60 Artikel: CP302SX - CP303DX
Tischlampe
L 25 P 25 H 103
Max 1x100W E14
Bronze patiniert Objekt, handgeblasenes Murano Glas.



Articolo: CP304SX - CP305DX
Lampada terra
L 25 P 25 H 197
Max 1x100W E14
Statua in fusione di bronzo patinata, base in marmo botticino, vetro di Murano soffiato a mano.



pg. 61 Article: CP304SX - CP305DX
Floor lamp
L 25 P 25 H 197
Max 1x100W E14
Bronze patined object, hand-made Murano glass, botticino marble base.

pg. 61 Artikel: CP304SX - CP305DX
Bodenlampe
L 25 P 25 H 197
Max 1x100W E14
Bronze patiniert Objekt, handgeblasenes Murano Glas, botticino Marmor Basis.



Articolo: TF466
Tavolo pranzo
D 135 H 75
Struttura in fusione di bronzo a cera persa patinata.

pg. 63 Article: TF466
Dining table
D 135 H 75
Bronze patined structure.

pg. 63 Artikel: TF466
Esszimmertisch
D 135 H 75
Bronze patiniert Struktur.



Articolo: TF468
Specchiera
L 65 H 97
Struttura in legno decorata, specchio anticato a mano.

pg. 65 Article: TF468
Mirror
L 65 H 97
Decorated wood structure, mirror hand painted.

pg. 65 Artikel: TF468
Spiegel
L 65 H 97
Decorated wood structure, mirror hand painted.



Articolo: TF467
Console
L 102 P 35 H 81
Struttura in fusione di bronzo a cera persa patinata, piano in marmo verde alpi.

pg. 65 Article: TF467
Console
L 102 P 35 H 81
Bronze patined structure, green marble top.

pg. 65 Artikel: TF467
Konsole
L 102 P 35 H 81
Bronze patiniert Struktur, gruen Marmor Top.



Articolo: KW1403A
Tavolo pranzo
D 135 H 75
Struttura in fusione di bronzo a cera persa patinata argento.

pg. 67 Article: KW1403A
Dining table
D 135 H 75
Bronze structure, silver patined.

pg. 67 Artikel: KW1403A
Esszimmertisch
D 135 H 75
Bronze Struktur, silber patiniert.



Articolo: SP132
Specchiera
L 70 H 102
Struttura in legno decorata, specchio anticato a mano.

pg. 68 Article: SP132
Mirror
L 70 H 102
Decorated wood structure, mirror hand painted.

pg. 68 Artikel: SP132
Spiegel
L 70 H 102
Holzstruktur, Spiegel handdekoriert.



Articolo: KW962A
 Console
 L 143 P 42 H 75
 Struttura in fusione di bronzo a cera persa patinata argento, base marmo travertino.

pg. 68

Article: KW962A
 Console
 L 143 P 42 H 75
 Bronze patined silver structure, travertino marble base.

pg. 68

Artikel: KW962A
 Konsole
 L 143 P 42 H 75
 Bronze Struktur, silber patiniert, Travertino Marmor Basis.

pg. 68



Articolo: KW964A
 Tavolo salotto
 L 146 P 76 H 43
 Struttura in fusione di bronzo a cera persa patinata argento, base marmo travertino.

pg. 69

Article: KW964A
 Tea Table
 L 146 P 76 H 43
 Bronze patined silver structure, travertino marble base.

pg. 69

Artikel: KW964A
 Salontisch
 L 146 P 76 H 43
 Bronze Struktur, silber patiniert, Travertino Marmor Basis.

pg. 69



Articolo: KW963A
 Tavolo pranzo
 L 240 P 110 H 75
 Struttura in fusione di bronzo a cera persa patinata argento, base marmo travertino.

pg. 71

Article: KW963A
 Dining table
 L 240 P 110 H 75
 Bronze patined silver structure, travertino marble base.

pg. 71

Artikel: KW963A
 Esszimmertisch
 L 240 P 110 H 75
 Bronze Struktur, silber patiniert, Travertino Marmor Basis.

pg. 17



Articolo: CP066L
 Lampada tavolo
 D 50 H 107
 Max 1x100W E27
 Oggetto in fusione di bronzo patinato, base marmo verde alpi, paralume pongè.

pg. 72

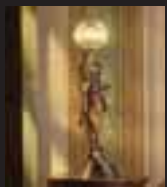


Article: CP066L
 Table lamp
 D 50 H 107
 Max 1x100W E27
 Bronze patined object, green marble base, pongè shade.

pg. 72

Artikel: CP066L
 Tischlampe
 D 50 H 107
 Max 1x100W E27
 Bronze patiniert Objekt, gruen Marmor Basis, pongè Schirm.

pg. 72



Articolo: CP065V
 Lampada tavolo
 D 24 H 85
 Max 1x100W E14 Hal
 Statua in fusione di bronzo patinata, vetro di Murano soffiato a mano.

pg. 73



Article: CP065V
 Table lamp
 D 24 H 85
 Max 1x100W E14 Hal
 Bronze patined objcet, hand-made Murano glass.

pg. 73

Artikel: CP065V
 Tischlampe
 D 24 H 85
 Max 1x100W E14 Hal
 Bronze patiniert Objekt, handgeblasenes Murano Glas.

pg. 73



Articolo: KW1583
 Lampada tavolo
 D 55 H 108
 Max 1x100W E27
 Oggetto in fusione di bronzo patinato, base marmoverde alpi, paralume pongè.

pg. 75



Article: KW1583
 Table lamp
 D 55 H 108
 Max 1x100W E27
 Bronze patined object, green marble base, pongè shade.

pg. 75

Artikel: KW1583
 Tischlampe
 D 55 H 108
 Max 1x100W E27
 Bronze patiniert Objekt, Gruen Marmor Basis, pongè Schirm.

pg. 75



Articolo: KW1558
 Lampada tavolo
 D 40 H 65
 Max 1x100W E27
 Oggetto in fusione di bronzo patinato, paralume pongè.

pg. 76

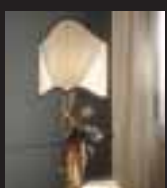


Article: KW1558
 Table lamp
 D 40 H 65
 Max 1x100W E27
 Bronze patined object, pongè shade.

pg. 76

Artikel: KW1558
 Tischlampe
 D 40 H 65
 Max 1x100W E27
 Bronze patiniert Objekt, pongè Schirm.

pg. 76



Articolo: CP065L
 Lampada tavolo
 L 38 P 25 H 112
 Max 1x100W E27
 Statua in fusione di bronzo patinato, paralume pongè.

pg. 77



Article: CP065L
 Table lamp
 L 38 P 25 H 112
 Max 1x100W E27
 Bronze patined objcet, pongè shade.

pg. 77

Artikel: CP065L
 Tischlampe
 L 38 P 25 H 112
 Max 1x100W E27
 Bronze patiniert Objekt, pongè shade.

pg. 77



Articolo: KW1487
 Lampada tavolo
 D 40 H 63
 Max 1x100W E27
 Oggetto in fusione di bronzo patinato, base marmo botticino, paralume pongè.

pg. 78

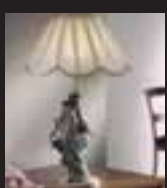


Article: KW1487
 Table lamp
 D 40 H 63
 Max 1x100W E27
 Bronze patined object, botticino marble base, pongè shade.

pg. 78

Artikel: KW1487
 Tischlampe
 D 40 H 63
 Max 1x100W E27
 Bronze patiniert Objekt, Botticino Marmor Basis, pongè Schirm.

pg. 78



Articolo: KW0153
 Lampada tavolo
 D 40 H 65
 Max 1x100W E27
 Oggetto in fusione di bronzo patinato, base marmo botticino, paralume pongè.

pg. 79

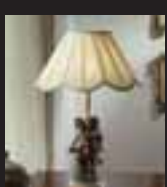


AArticle: KW0153
 Table lamp
 D 40 H 65
 Max 1x100W E27
 Bronze patined object, botticino marble base, pongè shade.

pg. 79

Artikel: KW0153
 Tischlampe
 D 40 H 65
 Max 1x100W E27
 Bronze patiniert Objekt, Botticino Marmor Basis, pongè Schirm.

pg. 79



Articolo: KW0263
 Lampada tavolo
 D 40 H 57
 Max 1x100W E27
 Oggetto in fusione di bronzo patinato, base marmo botticino, paralume pongè.

pg. 80



Article: KW0263
 Table lamp
 D 40 H 57
 Max 1x100W E27
 Bronze patined object, botticino marble base, pongè shade.

pg. 80

Artikel: KW0263
 Tischlampe
 D 40 H 57
 Max 1x100W E27
 Bronze patiniert Objekt, Botticino Marmor Basis, pongè Schirm.

pg. 80



Articolo: KW0174
Lampada tavolo
D 28 H 56
Max 1x100W E27
Oggetto in fusione di bronzo patinato, base marmo botticino, paralume pongè.

pg. 81

Article: KW0174
Table lamp
D 28 H 56
Max 1x100W E27
Bronze patined object, botticino marble base, pongè shade.

pg. 81

Artikel: KW0174
Tischlampe
D 28 H 56
Max 1x100W E27
Bronze patiniert Objekt, Botticino Marmor Basis, pongè Schirm.

pg. 81



Articolo: KW1481
Lampada tavolo
D 28 H 54
Max 1x100W E27
Oggetto in fusione di bronzo patinato, base marmo botticino, paralume pongè.

pg. 81



Article: KW1481
Table lamp
D 28 H 54
Max 1x100W E27
Bronze patined object, botticino marble base, pongè shade.

pg. 81

Artikel: KW1481
Tischlampe
D 28 H 54
Max 1x100W E27
Bronze patiniert Objekt, Botticino Marmor Basis, pongè Schirm.

pg. 81



Articolo: KW1147
Lampada tavolo
L 25 P20 H 41
Max 1x100W E27
Oggetto in fusione di bronzo patinato, paralume pongè.

pg. 82



Article: KW1147
Table lamp
L 25 P20 H 41
Max 1x100W E27
Bronze patined object, pongè shade.

pg. 82

Artikel: KW1147
Tischlampe
L 25 P20 H 41
Max 1x100W E27
Bronze patiniert Objekt, pongè Schirm.

pg. 82



Articolo: KW1521
Lampada tavolo
D 28 H 54
Max 1x100W E27
Oggetto in fusione di bronzo patinato, base marmo botticino, paralume pongè.

pg. 83

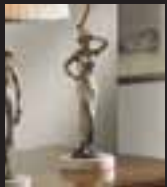


Article: KW1521
Table lamp
D 28 H 54
Max 1x100W E27
Bronze patined object, botticino marble base, pongè shade.

pg. 83

Artikel: KW1521
Tischlampe
D 28 H 54
Max 1x100W E27
Bronze patiniert Objekt, Botticino Marmor Basis, pongè Schirm.

pg. 83



Articolo: KW0297
Lampada tavolo
D 28 H 57
Max 1x100W E27
Oggetto in fusione di bronzo patinato, base marmo botticino, paralume pongè.

pg. 83



Article: KW0297
Table lamp
D 28 H 57
Max 1x100W E27
Bronze patined object, botticino marble base, pongè shade.

pg. 83

Artikel: KW0297
Tischlampe
D 28 H 57
Max 1x100W E27
Bronze patiniert Objekt, Botticino Marmor Basis, pongè Schirm.

pg. 83



Articolo: CP065
Oggetto bronzo
D 24 H 74
Oggetto in fusione di bronzo patinato.

pg. 84

Article: CP065
Object bronze
D 24 H 74
Bronze patined object.

pg. 84

Artikel: CP065
Gegenstand bronze
D 24 H 74
Bronze patiniert Objekt.

pg. 84



Articolo: CP064
Oggetto bronzo
D 26 H 74
Oggetto in fusione di bronzo patinato.

pg. 84

Article: CP064
Object bronze
D 26 H 74
Bronze patined object.

pg. 84

Artikel: CP064
Gegenstand bronze
D 26 H 74
Bronze patiniert Objekt.

pg. 84



Articolo: CP066
Oggetto bronzo
D 22 H 67
Oggetto in fusione di bronzo patinato.

pg. 85

Article: CP066
Object bronze
D 22 H 67
Bronze patined object.

pg. 85

Artikel: CP066
Gegenstand bronze
D 22 H 67
Bronze patiniert Objekt.

pg. 85



Articolo: CP301
Lampada terra
D 38 H 200
Max 1x150W E27
Statua in fusione di bronzo a cera persa patinata, base in marmo botticino e vetro di Murano soffiato a mano.

pg. 86



Article: CP301
Floor lamp
D 38 H 200
Max 1x150W E27
Bronze patined object, botticino marble base, hand-made Murano glass.

pg. 86

Artikel: CP301
Bodenlampe
D 38 H 200
Max 1x150W E27
Bronze patiniert Objekt, botticino Marmor Basis, handgeblasenes Murano Glass.

pg. 86

Catalogo digitale

Una copia digitale di questo Catalogo in formato .pdf (Acrobat) è presente sul nostro sito Internet www.gammadeltagroup.com. Potrete liberamente scaricarlo sul vostro computer in pochi minuti.

Note tecniche

Le descrizioni e le dimensioni degli apparecchi illustrati in questo catalogo sono fornite a titolo indicativo. La Gammadeltagroup s.r.l. si riserva il diritto di apportare le modifiche che ritenga necessarie. Le dimensioni ed il colore che si trovano nelle indicazioni tecniche hanno una tolleranza dovuta alla lavorazione caratteristica dei vetri soffiati, e possono essere variati dalla Gammadeltagroup s.r.l. qualsiasi momento senza preavviso.

Digital catalog

A digital version of this Catalogue in .pdf (Acrobat) format is available at our Internet site www.gammadeltagroup.com. It can be downloaded to your computer in a few minutes free of charge.

Technical notes

The descriptions and dimensions of the light fixtures illustrated in this catalogue are provided as purely an indicative. Gammadeltagroup s.r.l. reserves the right to make any modifications that may be necessary. The dimensions and colours described in the technical clarification have a leeway due to the characteristic of the hand-blown glasses which can be altered by Gammadeltagroup s.r.l. at any moment, without notice.

Digitale katalog

Eine digitale Kopie dieses Katalogs im Format .pdf (Acrobat) steht Ihnen unter unserer Internet-Adresse www.gammadeltagroup.com zur Verfügung. Sie können diesen in wenigen Minuten frei auf Ihren Computer abrufen.

Technische anmerkung

Die Beschreibungen und die Abmessungen der in diesem Katalog dargestellten Leuchten sind als richtungsweisend anzusehen. Gammadeltagroup s.r.l. behält sich das Recht vor, Änderungen vorzunehmen, falls dies erforderlich sein sollte. Die in den technischen Hinweisen beschriebenen Abmessungen und die Farbe haben aufgrund der Charakteristiken der geblasenen Gläser eine Toleranz, die von Gammadeltagroup s.r.l. jederzeit ohne vorherige Ankündigung geändert werden kann.

Simboli - Symbols - Symbole



- Dichiarazione di conformità
- Declaration of conformity
- Konformitätserklärung



- Montaggio su superfici normalmente incombustibili
- Mounting on inflammable surfaces normally
- Montage auf normal entflammbaren Oberflächen



- Apparecchio classe II
- Fixture class II
- Leuchte Klasse 2



- Regolatore di tensione
- Dimmer
- Dimmer



- Terra
- Earth
- Erde

Graphics design
Studio Gammadeltagroup

Photos
Photodesign

Print
Grafiche Quattro



GAMMADELTA GROUP S.R.L.
Statale Adriatica Km. 10,2
35020 Due Carrare - Padova - Italy
Tel. +39 049 9125155 - Fax +39 049 9125542
info@gammadeltagroup.com
www.gammadeltagroup.com